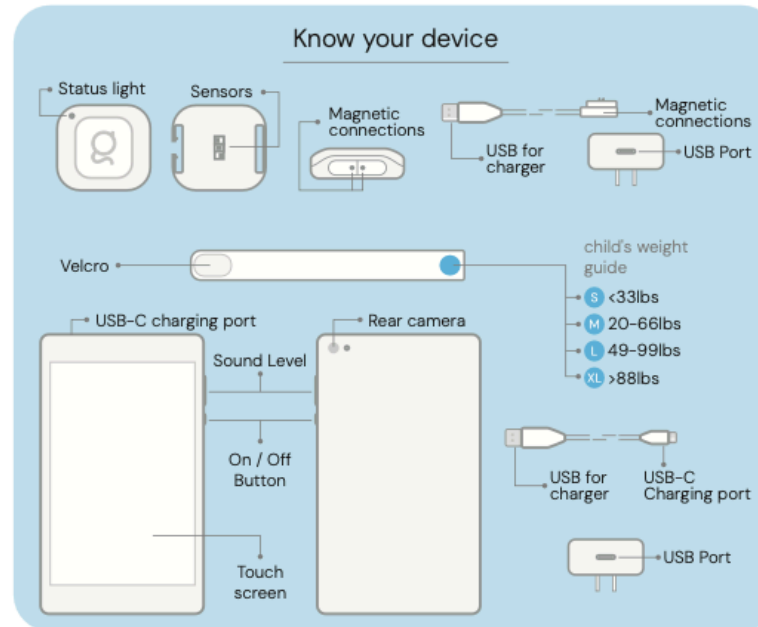
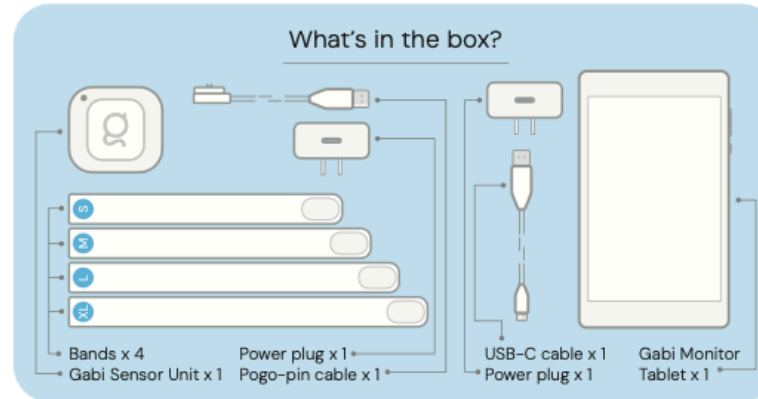




Gabi System
Quick Setup Guide
vD



Setup Instructions

- 1** Plug USB-C cable to the Gabi Monitor Tablet and to the power adaptor
- 2** Switch on the Gabi Monitor Tablet
- 3** Follow setup instructions

Add straps to sensor



Gabi Band placement





Make sure to keep the Gabi Monitor Tablet plugged to the electrical socket while using.



Make sure to keep the Gabi Monitor Tablet no further than 16ft from the Gabi Band.



Scan me



For comprehensive information, please refer to the Instructions For Use (IFU) located on the Gabi Documentation Center.



Status light indications

- **White blinking:** Device is charging **White steady:** Fully Charged
- **Green steady:** Gabi Band worn and ready for recording
- **Purple blinking:** Low battery, charge now
- **Yellow steady:** Software updating, do not disconnect the band from the charger
- **Blue steady:** On-going pairing between Gabi Monitor Tablet and Gabi Band
- **Red steady:** An error occurred. try to update the firmware.
If the problem persists, contact the customer support.



www.gabismartcare.com



support@gabismartcare.com

Gabi System

Quick Setup Guide
vD